

From Internal Validation to Sensitivity Test: How Grid Computing Facilitates the Construction of an Agent-Based Simulation in Social Sciences

Frank C.S. Liu¹

*Institute of Political Science, National Sun Yet-San University
No. 70 Lian-Hai Rd., Kaohsiung 804, Taiwan, R.O.C.
E-mail: csliu@mail.nsysu.edu.tw*

Jing-Ya You

*Academia Sinica Grid Computing Center
128, Sec.2, Academia Road, Nankang, Taipei 11529, Taiwan, R.O.C.
E-mail: jingya.you@twgrid.org*

Yu-Ting Chen

*Academia Sinica Grid Computing Center
128, Sec.2, Academia Road, Nankang, Taipei 11529, Taiwan, R.O.C.
E-mail: yuting.chen@twgrid.org*

Jing-Lung Sun

*Department of Computer Science, National Tsing Hua University
30013 No. 101, Section 2, Kuang-Fu Road, Hsinchu, Taiwan 30013, R.O.C.
E-mail: s9962571@m99.nthu.edu.tw*

Over the past decades, we see a trend that social scientists adopt the experiment approach to study our social and political world. Particularly, agent-based modelling (ABM) is employed as a tool for “thought experiment” because theorists usually (1) fall short of empirical data to contrast with experiment results and (2) are more interested in solving theoretical puzzles than empirical puzzles. Applications of ABM in the social sciences, therefore, are commonly centered on issues that do not require a serious empirical validation process, at least compared to empirical data. Consequently, current application of ABM in social sciences (except the field of business management) has not reached the stage of sound validation and verification (V&V). To take a further step out of this situation, we suggest that researchers adopting computer-based approach conduct sensitivity test of their models. This step at least ensures that simulation results are robust and trust worthy. Few scholars in this field, however, are aware of the utility of grid and cloud computing that can advance the application of ABM. This paper is devoted to bridge the two sides (grid computing and political science) by, first, describing how grid and cloud computing may help the design of an agent-based model. Second, we will present an example of (re)constructing the SRAS model of political

¹ Speaker

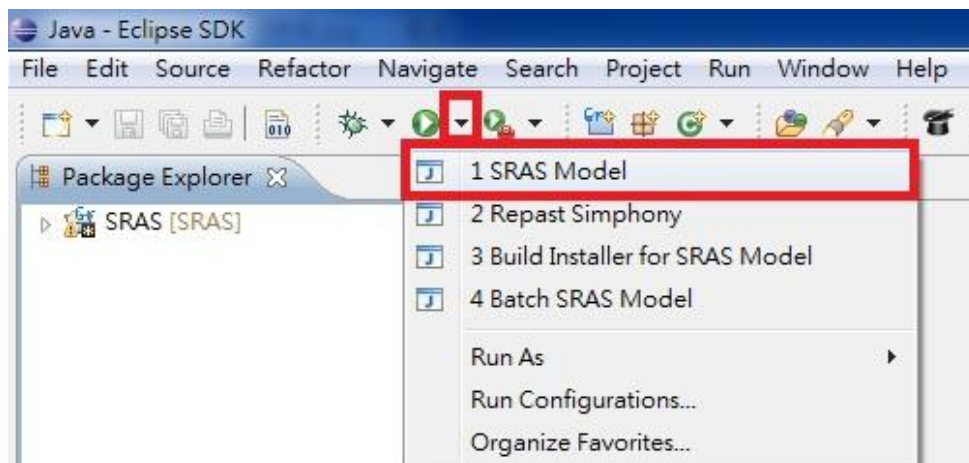
preference formation—an agent-based model based on John Zaller’s (1992) Receive-Accept-Sample theory, and put it into a sensitivity test with the power of grid computing.

Keywords: Agent-based modeling; empirical validation; empirical validation.

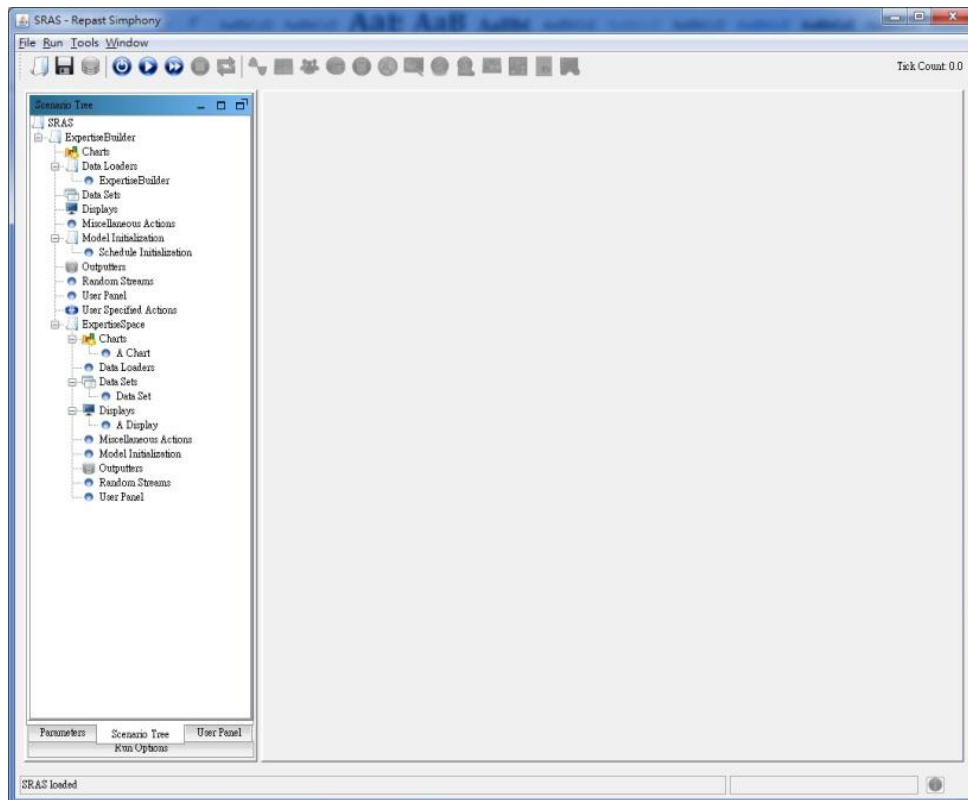
*The International Symposium on Grids and Clouds and the Open Grid Forum
Academia Sinica, Taipei, Taiwan
March 19 - 25, 2011*

Appendix II: Using SRAS in Repast Simphony

1. Download “Eclipse + Repast Simphony” toolkit from <http://repast.sourceforge.net/download.html>
2. Install the toolkit (for more details, see <http://repast.sourceforge.net/docs.html>)
3. Download SRAS from <http://www2.nsysu.edu.tw/politics/liu/ABM/ISGC2011/SRAS.rar>
4. Unpack the file and in Repast, import SRAS: File -> Import
5. Execute SRAS
 - (1) Run SRAS Model: Press the black triangle [▼] beside Run [▶] button and choose SRAS Model (see Fig1). Wait for a few seconds, SRAS will display (see Fig 2).



(Fig 1)

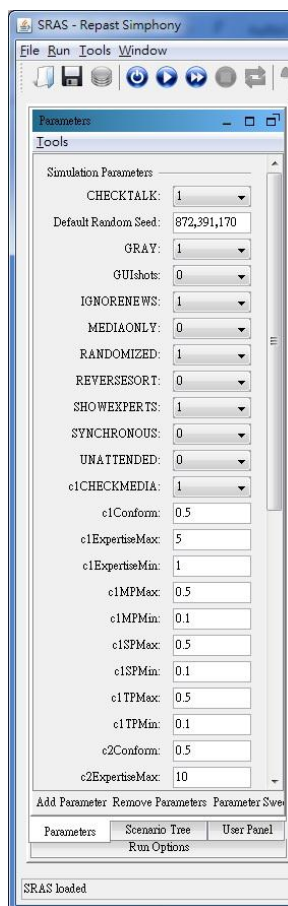


(Fig 2)


- (2) Set parameter: you can reset parameter values at “Parameter” at lower left side (see Fig 3 and Fig 4).

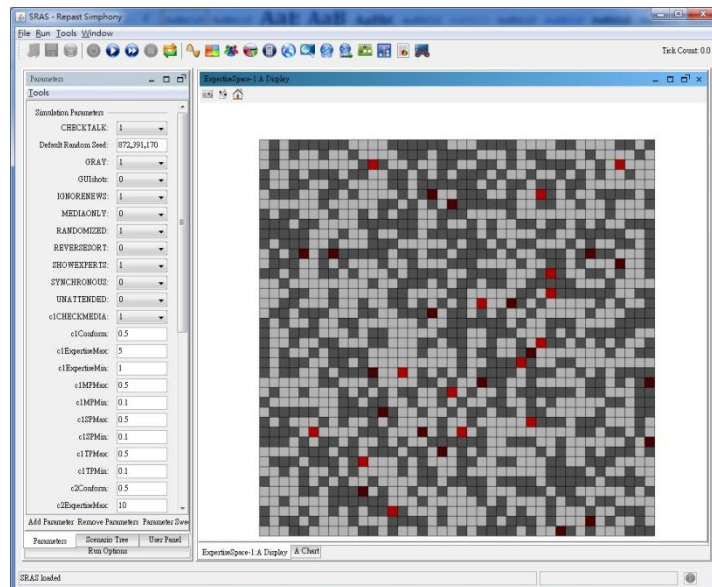


(Fig 3)

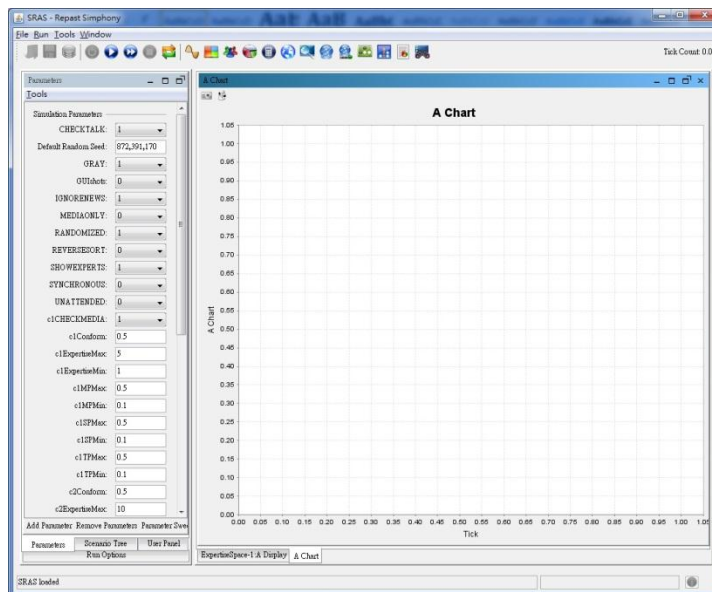


(Fig 4)

- (3) Initial SRAS: press the initialize run button []. Then Repast will display two windows (see Fig 5 and Fig 6) and give some messages at bottom frame (see Fig 7).



(Fig 5)





(Fig 6)

```

Problems @ Javadoc Declaration Error Log Console History
SRAS Model [Java Application] D:\RepeatSimphony-2.0-beta\eclipse\jre\bin\javaw.exe (2011/3/19 上午10:44:54)
The proportion of Citizens2 was set to = 0.02
The proportion of Citizen1 holding YES was set to = 0.5
The proportion Citizen2 holding YES was set to = 0.5
The N of Citizen1: 1566
The N of Citizen2: 34
The actual N of Citizen1 holding YES is 849, and the actual proportion is 0.5421455938697318
The actual N of Citizen2 holding YES is 15, and the actual proportion is 0.4411764705882353
    
```

(Fig 7)

- (4) Run SRAS: now you can run SRAS step by step by press [] or run until it stop by press [].