

# ***EasIR™-9 is High-end infrared camera of EasIR Series***

*EasIR™-9 is a high-end infrared camera of Guide EasIR series. In a rugged and ergonomical design, it is robust and shock-resistant for any tough working environment. The 3-button design and navigation interface allows users' skilled operation without training. Featured with Infra Fusion technology and built-in illuminator lamp, it helps you pin-point the problem exactly in high efficiency. Using EasIR™-9, easy for your work.*

## ***Features and Benefits***



### **Live Video recording**

Record video on board with date and time info for review and analysis

### **Flexible Battery Compatibility**

never worry about the battery replacement



### **Large Storage Capacity**

Benefiting from 4G SD card inside and the capability for enlarging to a larger capacity

**Large Screen Display**  
The 3.6 TFT LCD delivers high resolution thermal and visual image



### **Four Manual-focus Lens Optional**

Easy satisfy users for different applications with minimum invest



## ***Applications***

- Predictive and preventative maintenance
- Electrical inspections
- Building diagnostics
- Technical diagnostics
- Veterinarian helper



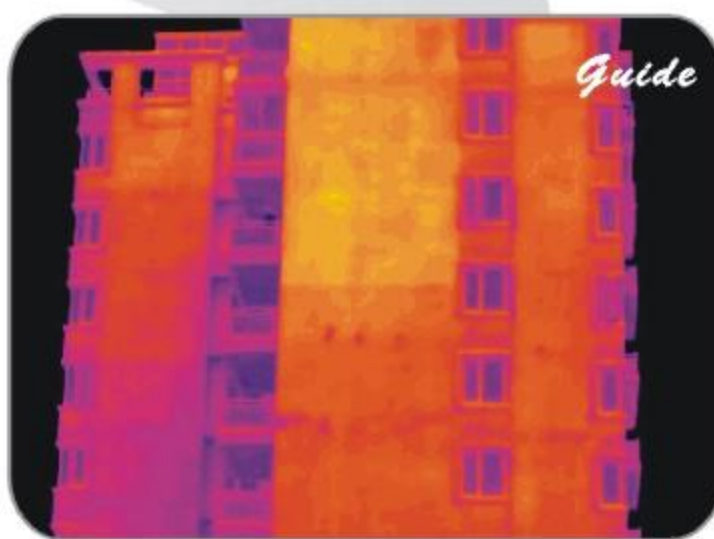


# Specifications

Imaging Performance	
Detector type	Uncooled FPA microbolometer (384×288 pixels, 25μm)
Spectral Range	8-14μm
Thermal Sensitivity	≤0.08℃@30℃
Field of View/ Focus	21.7° X16.4° / 25mm standard (40.53° X30.96° /13mm, 13.04° X 9.8° / 42mm, 7.85° X 5.89° /70mm optional)
Focus	Manually
Electronic Zoom	X2
Built-in Digital Video	CMOS Sensor, 1600X1200 pixels, 2 <sup>24</sup> true colors
Image Presentation	
External Display	3.6" TFT LCD with high resolution
Video Output	PAL/ NTSC
Infra Fusion	Visual and IR blending
Measurement	
Temperature Range	-20℃ to 250℃ (350℃ and 1500℃ are optional)
Accuracy	±2℃ or ±2% of reading
Emissivity Correction	Variable from 0.01 to 1.00
Measurement Features	Automatic correction based on distance, relative humidity, dew point function, atmospheric transmission and external optics
Image Storage	
Type	Removable 4GB SD card & built-in memory (8GB SD card optional)
File Format	JPG with analysis records
Voice Annotation	Up to 60 seconds
Laser Locator	
Classification	Semiconductor A1 GaInP Diode Laser
Power System	
Battery Type	AA rechargeable battery, field-replaceable, AA Alkaline battery also usable
Charging System	In camera or in battery charger
Battery Operating Time	Over 2 hours continuous operation
External Power Operation	AC adapter 110/ 220 VAC, 50/ 60Hz
Environmental Specification	
Operating Temperature	-10℃ to +50℃
Storage Temperature	-20℃ to +60℃
Humidity	Operating and storing 10% to 95%, non- condensing
Encapsulation	IP54 IEC 529 housing
Shock:Operational	25G, IEC 68-2-29
Vibration: Operational	2G, IEC 68-2-6
Interfaces	
USB 2.0	Real-time image (thermal & visual) , measurement, and voice transfer to PC;Live video transfer to PC
Physical Characteristics	
Weight	0.79KG
Size	112mmx182mmx252mm (with 25mm lens)



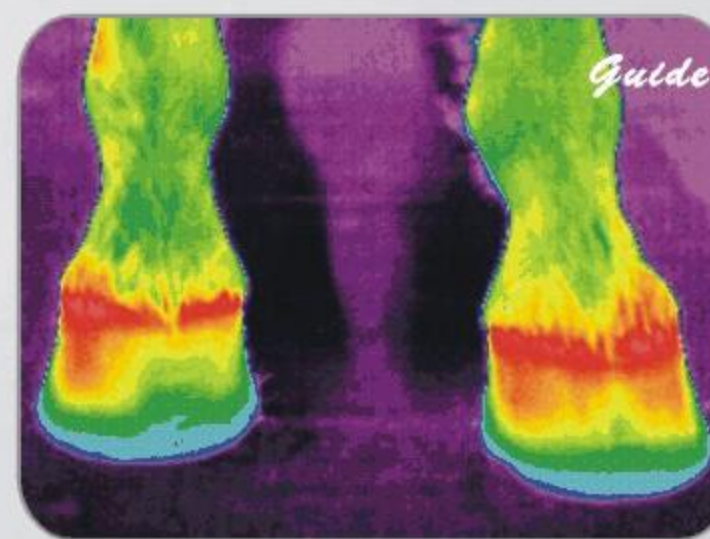
Inspect electricity hot point



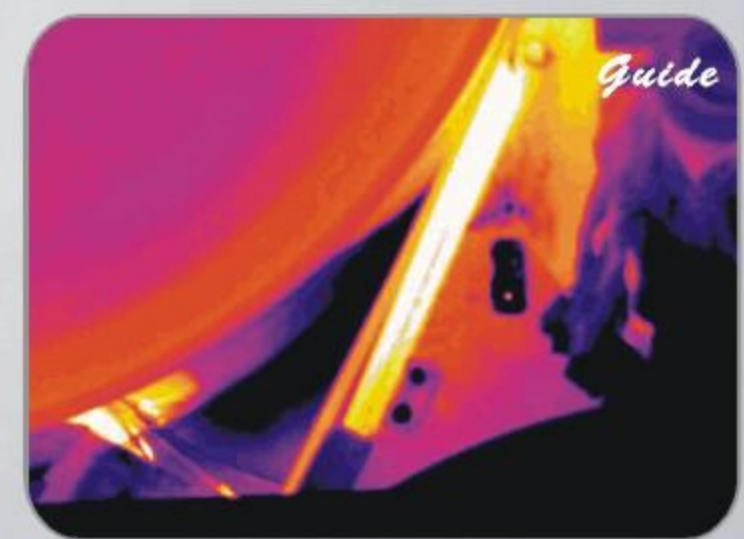
Inspect building structure



Monitoring and analysis heat distribution



Measure animal temperature



Evaluate equipment operating